



# *Improvin' Movin' in the Arrowhead*

Summer 2008

"Working to guide transportation decisions in Northeast Minnesota"

## Inside this issue:

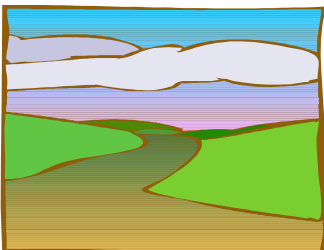
Finland Trails Update	1
I-Falls Gateway Corridor	1
Freight Study	1
RTAC Grant Applications	2
Squaw Lake Trails	2
Aitkin Access Plan	2
Ely Bike/Ped Plan	2
Stakeholders Meeting	2

## Next RTAC Meeting

The next RTAC meeting will be held in International Falls on October 9<sup>th</sup>. The meeting will begin at 10:00 AM and will be held at the \_\_\_\_\_.

The agenda will include

- In-Kind Grant Project Selections
- Tour and Presentation – International Falls Gateway Corridor
- International Falls Safe Routes to School



## **In-kind Projects for FY 2009**

The RTAC funded three In-kind Grant Project for FY 2009. They are:

### Ely Bicycle and Pedestrian Plan

The purpose of the Ely Bicycle/ Pedestrian Plan is to identify barriers and unsafe conditions for residents and visitors walking and biking in Ely. This plan will also create a Safe Routes to School Plan for the Ely School District. Work on this project has begun and is expected to be finished in the spring of 2009. An inventory of all the bicycle and pedestrian facilities has been complete and a GIS layer has been created to show the location of these facilities. The first committee meeting will be held the first week in October.

### Squaw Lake Trails Plan

This trails plan will work to separate pedestrians and cyclists from vehicular traffic on Trunk Highway 46. The purpose of the project is to promote the health and safety of residents and visitors to the Squaw Lake Area. This project began in August with a complete inventory of bicycle, pedestrian, and roadway facilities. This information has been placed into a GIS data layer that will show the location of these facilities on a map. The majority of the planning process will occur this winter with an expected completion date in the spring of 2009.

### Aitkin Access Management Plan

ARDC will work with the City of Aitkin to develop an access management plan. Trunk Highway 210 and 169 both intersect in downtown Aitkin, with TH 210 running east and west through Aitkin and TH 169 running north south. This plan will create a tool to address existing unsafe situations and guide future development in a way that protects the safety and functionality of these important corridors. Accesses along the roadway have been inventoried and the first

committee meeting will be held during the last week in September. This planning process is expected to take six months to complete.



Bryan Anderson, Planner  
banderson@ardc.org  
218-529-7529

Ben Van Tassel, Planner  
bvantassel@ardc.org  
218-529-7513

Arrowhead Regional Development Commission  
221 West First Street  
Duluth, MN 55802  
Fax: 218-529-7592

[www.arrowheadplanning.org](http://www.arrowheadplanning.org)